



AZIMUT | BENETTI  
GROUP

[LUSBEN GENERAL MANAGER]

**GIORGIO CASARETO**

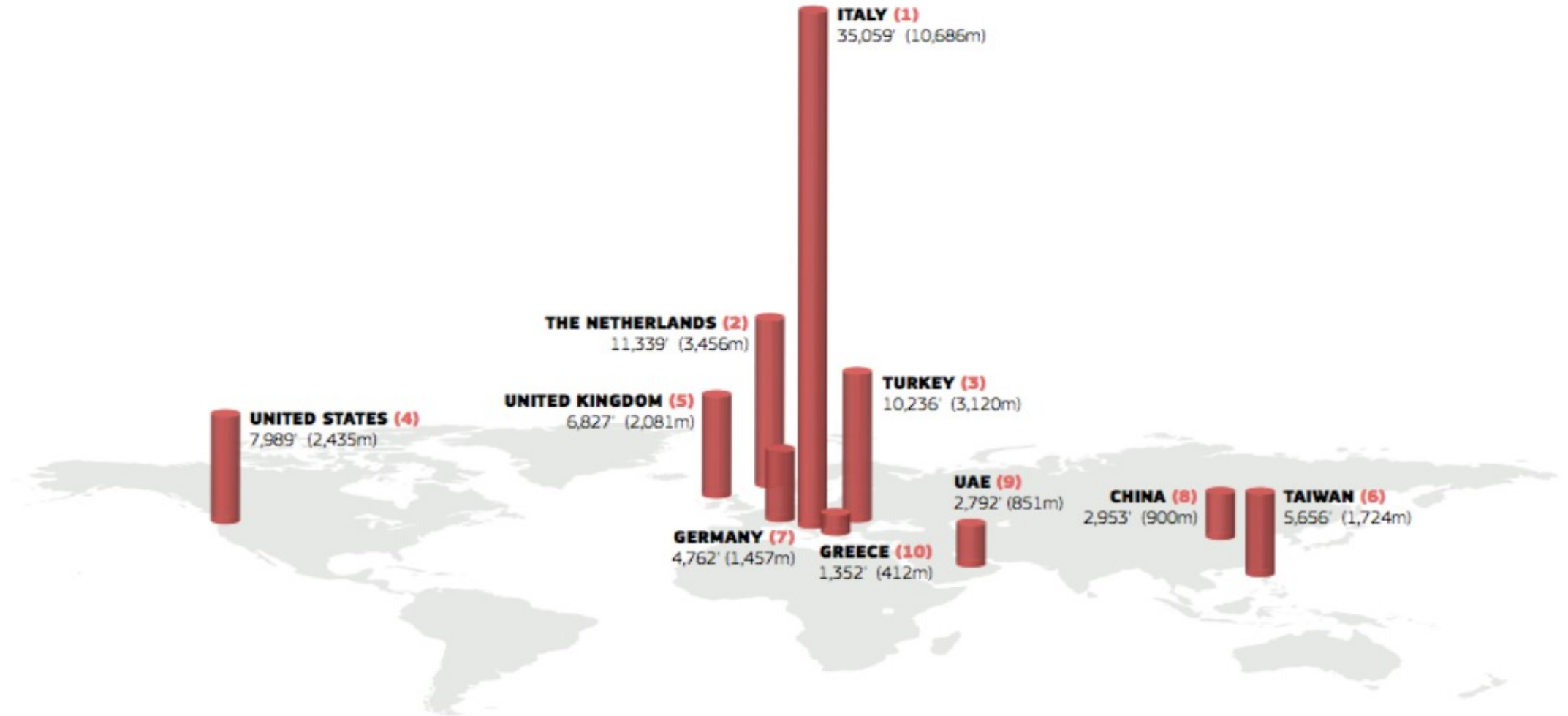
[HEAD OF PEOPLE & ORGANIZATION , BENETTI YACHTS & LUSBEN]

**GIANLUCA BENEDETTINI**

AZIMUT | BENETTI  
GROUP



# THE TOP TEN YACHTS BUILDING NATIONS



# THE FIRST BUILDER OF YACHTS OVER 24M FOR 23 YEARS

## TOP BUILDERS BY TOP LENGTH OF CONSTRUCTION

2023 RANK	COMPANY	TOTAL LENGTH (M)	NUMBER OF PROJECTS	AVERAGE LENGTH (M)	NUMBER OF PROJECTS, 2022	2022 RANK
1	Azimut-Benetti	5,991	168	35.7	128	1
2	Sanlorenzo	4,577	128	35.8	117	2
3	Ocean Alexander**	2,382	73	32.6	47	3
4	Feadship*	1,672	N/A	N/A	N/A	4
5	Princess Yachts	1,588	63	25.2	N/A	N/A
6	Sunseeker	1,443	53	27.2	N/A	N/A
7	Lürssen*	1,233	11	112.1	9	5
8	The Italian Sea Group	1,149	21	54.7	12	8
9	Damen Yachting	1,022	15	68.1	13	7
10	Overmarine	1,017	25	40.7	24	6
11	Horizon**	825	29	28.4	24	9
12	Palumbo	768	18	42.7	12	15
13	Baglietto	749	16	46.8	14	10
14	Viking Yachts*	681	26	26.2	22	13
15	Heesen Yachts	634	11	57.6	11	11
16	Sunreef Yachts	564	22	25.6	18	16
17	Oceanco	561	5	112.2	5	14
18	Bilgin Yachts	523	8	65.4	N/A	N/A
19	Cantiere delle Marche	504	13	38.7	15	12

\*data partially shared by the shipyard \*\*shipyard not yet visited at press time

# A GLOBAL PRIVATE COMPANY

THE HIGHLIGHTS OF A POWERFUL GROUP

**1** MAIN  
SHAREHOLDER

**> 120** MLN €  
APPROX.  
Investments in the next 3 years

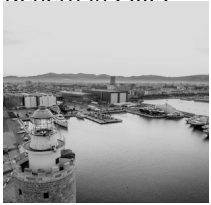
**50** YEARS  
Of history

**1B** € VALUE  
OF  
PRODUCTION  
2021/2022

# A HISTORY OF SUCCESS

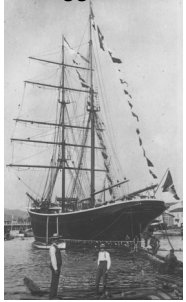
**1866**

Foundation of the historical Fratelli Orlando shipyard in Livorno, acquired by Benetti in 2003



**1873**

Foundation of the Benetti shipyard in Viareggio



**1961**

Benetti introduces the 22m Gabbiano, charming Prince Rainier III of Monaco, Grace Kelly and the celebrities elite.

**1979**

The launch of the 86m M/Y Nabila, the most famous yacht of her



**1982**

Failaka, the first 30m built entirely of fiberglass materials, in just 100 days. Christina Onassis ordered Failaka to celebrate her daughter's baptism.



**1998**

Benetti introduces the Benetti classic, vision and tradition, the first luxury pocket yachts



**2000**

Benetti promotes the yachting avant-garde with the 70M M/Y Reverie: everything extraordinary.

**2021**



OASIS DECK®



**1969**

Paolo Vitelli begins to charter sailing yachts: Azimut Yachts was born.

**1975**

AZ 43' Bali. The first AZ model

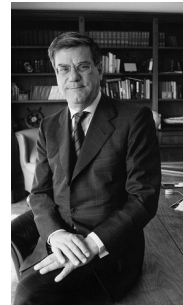


**1977**

AZ32 Targa, the «Ford T of the sea». The market discovers a new passion for weekend cruises.

**1985**

The Azimut group, owned by Paolo Vitelli, acquires the Benetti shipyard



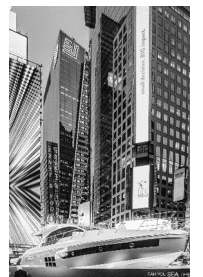
**1988**

Cesare Fiorio skippered the thrilling direct transatlantic crossing by Pininfarina's Azimut Atlantic Challenger, with the famous Winthrop Rockefeller as one of the passengers.



**2009**

The Magellano 74: the first crossover in the yachting industry.



**2019**

For the first time ever during NYCxDDesign, a yacht lands in Times Square New York.

# OUR FLEET



**13**

PRODUCT LINES

7 AZIMUT  
6 BENETTI

**34**

MODELS +  
CUSTOM FAMILIES

**5**

GIGA YACHTS  
OVER 85M

**10.100+**

METERS

PRODUCT RANGE



*Beretti*





# FB272 M/Y LUMINOSITY

THE WORLD'S LARGEST GIGA-HYBRID YACHT



## AWARDED WITH

DESIGN INNOVATION AWARDS 2021, BOAT INTERNATIONAL -  
OUTSTANDING EXTERIOR MOTOR YACHT DESIGN

ROBB REPORT - BEST OF THE BEST: BEST GIGA YACHT 2020

WORLD YACHT TROPHIES 2020 - YACHT OF THE YEAR

BOAT BUILDER AWARD 2019 - INNOVATIVE ON-BOARD  
DESIGN SOLUTION



*Benetti*



FB275 M/Y IJE

*Benetti*



AZIMUT | BENETTI  
GROUP



# FB277 M/Y LANA



## AWARDED WITH

DESIGN INNOVATION AWARDS 2021, BOAT INTERNATIONAL -  
OUTSTANDING EXTERIOR MOTOR YACHT DESIGN

WORLD YACHT TROPHIES 2019 - YACHT OF THE YEAR -  
YACHTS OVER 82M



*Benetti*



# BENETTI TODAY

150

YEARS OF EXCELLENCE

420+

YACHTS BUILT

240.000 sqm

OF PRODUCTION FACILITIES

THE ONLY FLEET RANGING  
FROM 34 M TO

100+ m

# LIVORNO SHIPYARD



250 personnel  
BENETTI RESOURCES

1.400 personnel  
EXTERNAL RESOURCES

5.500 entrance per  
ENTRANCE  
day

500 crew members  
CREW



# TRULY INTERNATIONAL, PROUDLY ITALIAN

[ITA]

## VIAREGGIO Headquarters

Via Michele Coppino, 104  
55049 – Viareggio (Lucca)  
Tel +39 0584 3821  
Fax +39 0584 396232  
info@benettiyachts.it

[ITA]

## LIVORNO Yards

Via Edda Fagni, 1  
57100 – Livorno, Italy  
Tel: +39 0586 415600  
Fax: +39 0586 834053  
info@benettiyachts.it

[UK]

## LONDON

12 Hay Hill  
Mayfair  
London W1J 8NR  
Mob +44 7788 925 337  
toby.walker@benettiyachts.it

[USA]

## FORT LAUDERDALE

Benetti Americas  
1535 SE 17th Street – Suite B 101  
Ft Lauderdale, FL 33316, USA  
Tel +1 (954) 687 9436  
info@benettiamericas.it

[APAC]

## HONG KONG

Level 27, World Wide House,  
19 Des Voeux Road Central,  
Central, Hong Kong  
Mob +852 5190 0112  
p.mahony@benettiyachts.asia

[UAE]

## DUBAI

Jumeirah Business Center 2  
JLT, Dubai  
Tel: +971 5555 24 852  
Fax: +971 4 439 0185  
nabil.eljammal@benettiyachts.it

## 360° SERVICES

WHAT ARE WE DOING FOR OUR CLIENTS?

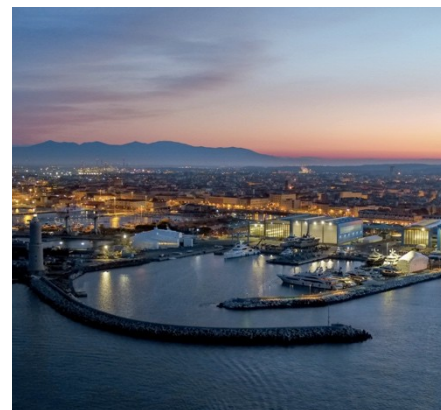
**Refit &  
Repair  
Crew  
Training**

*Lusben\**



**Custom Design**

**Art &  
Styling**



**Owned Marinas**

LIVORNO | VIAREGGIO  
VARAZZE | MALTA



A wide-angle photograph of a sunset over the ocean. The sun is a bright yellow circle on the horizon, casting a shimmering reflection on the water. The sky transitions from a pale blue at the top to a deep orange near the horizon. The water is a dark blue-grey with small, rhythmic waves. A quote is overlaid in the center of the image.

*“You can never cross the ocean if you don't have the courage to get wet.”*

# LA NOSTRA STORIA



VIAREGGIO

VIAREGGIO

LIVORNO

VARAZZE

LIVORNO

1956

2000

2004

2019

2025

Nata originariamente come Lusben Craft, si è affermata come azienda leader nel refitting e nella manutenzione di yacht fino a 30 metri in tutto il Mediterraneo.

Acquisizione dello storico cantiere di refit & repair da parte del Gruppo Azimut|Benetti

La sede di Livorno è stata scelta per i suoi grandi spazi e le possibilità di espansione futura

Cantiere di Varazze acquisito per controllare strategicamente tutta l'area.

Potenziamento di aree, tecnologia e attrezzature, finalizzato a sviluppare una posizione di leadership a livello internazionale.

# COSA RENDE LUSBEN UNICA

## **UNA LUNGA TRADIZIONE E UNA SOLIDA ESPERIENZA NELLA COSTRUZIONE**

Trasformazione di yacht di ogni dimensione e complessità.

## **LE INFRASTRUTTURE**

Progettate per yacht di ogni dimensione e interventi di ogni tipo.

## **MANAGEMENT E FORZA LAVORO ALTAMENTE QUALIFICATI**

Esperti qualificati nelle più avanzate tecnologie e sistemi

## **UN NETWORK VASTO ED ESPERTO**

Contractors in ogni dipartimento: acciaio, meccanica, verniciatura, interni, elettronica ed impianti audio video

# SERVIZI, TECNOLOGIE ED ATTREZZATURE

## VIAREGGIO

TRAVEL LIFT  
**600 T**

CARRELLI MOVIMENTAZIONI  
**250 T**

CARRELLI MOVIMENTAZIONI  
**80 T**

CABINA DI VERNICIATURA  
**YACHTS FINO 60MT**

**30.000 SQM** MARINA

**34** ORMEGGI

**14** POSTAZIONI A TERRA

**1** POSTAZIONE  
A TERRA COPERTA

FORESTERIE

HELIDECK

## LIVORNO

TRAVEL LIFT  
**300 T**

CARRELLI MOVIMENTAZIONI  
**1050 T**

BACINO GALLEGGIANTE  
**180MT**

SYNCROLIFT (SHIPLIFT)  
**2400 T**

BUCA DELLA DERIVA

**45.000 SQM** MARINA

**20** ORMEGGI MARINA TECNICA

**25** POSTAZIONI A TERRA

ALLOGGIO EQUIPAGGIO

HELIPAD

## VARAZZE

TRAVEL LIFT  
**400 T**

CARRELLI MOVIMENTAZIONI  
**250 T**

CARRELLI MOVIMENTAZIONI  
**80 T**

**7.000 SQM** MARINA

**8** ORMEGGI MARINA TECNICA

**7** POSTI A TERRA

**2** POSTI A TERRA COPERTI

ACCESSO ALLA MARINA

ALLOGGIO EQUIPAGGIO





The figures say who we are, but not how we managed to come this far. Behind these results there is our enduring passion for the sea, for sailing, for our work. And for the challenges ahead.

AZIMUT | BENETTI  
GROUP